

# THE PENTHOUSE

BY THE PAVILION



wine cellar  
13,7 M<sup>2</sup>



gossip room  
18,7 M<sup>2</sup>



the dining room  
56,3 M<sup>2</sup>



the foyer  
16,6 M<sup>2</sup>



the library 123 M<sup>2</sup>

the pantry  
45,6 M<sup>2</sup>



the living room 31,5 M<sup>2</sup>



*never away....*

revel in a universe of epicurean delight  
without leaving your homely unpretentious oasis



## THE PENTHOUSE

*the library*

*the living room*

*the dining room*

*the pantry*

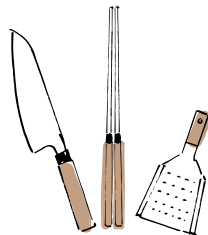
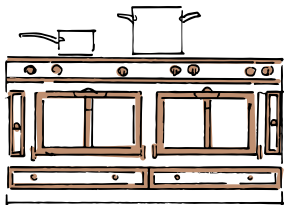
*gossip room*

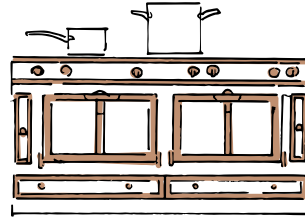


# THE PENTHOUSE

A concept of a homely environment where you are able to gather and socialize with your family, friends, and colleagues; the Penthouse offers an intimate space for eating, drinking, and celebrating.

Featuring five individually-designed spaces in one place, from home-cooked meals in The Pantry, afternoon tea in The Living room, a Kaiseki Ryori dining experience in The Dining Room, curated wines and liquors at The Library to simply delicious cocktails in The Gossip Room, The Penthouse is a room of one's own.





## *the pantry*

The pantry sets the tone of the entire Penthouse  
warm, intimate serving delicious home cooked food.

With a setting of a homely kitchen, bright natural lightings and wooden tables,  
guests can enjoy Executive Chef Tita Juwadi's "Comfort Cuisine to Perfection".

Comfort food at its best.



















## *the pantry*

Simply for those who LOVE  
to cook and EAT...

The Pantry is available for  
private events which can hold  
up to 24 guests from gatherings,  
cooking classes to workshops,  
our team will help tailor the  
perfect event for you.

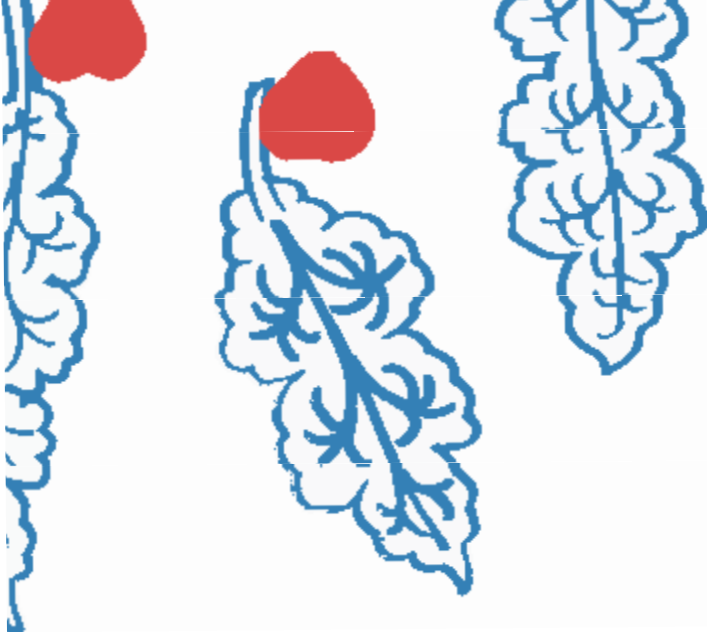






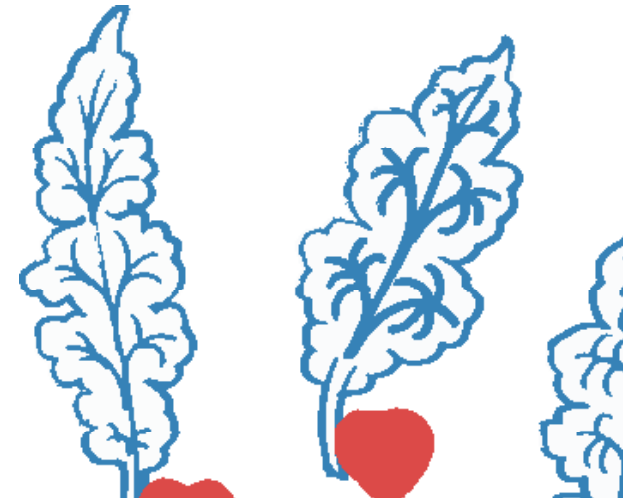






## *the living room*

A small living area connected to the pantry with comfortable sofas,  
a sitting area perfect for meetings, afternoon tea, light snacks  
and evening cocktails.











## *the pantry & the living room*

### Venue Hire

11:00 - 13:00	IDR 10.000.000
14:00 - 17:00	IDR 8.000.000
18:00 - 22:00	IDR 15.000.000

### Bring Your Own Chef

Rates are as above. Please bring your own ingredients, you are welcome to use selected equipments - please let our staff know of your needs during reservation

Max. 12 PAX - with 1 week prior notice



## *the library*

Perfect for executives, disruptors and digital nomads, furnished with leather sofas and warm tone interior, set your business meetings here, or wind down at the bar that serves carefully crafted cocktails, a curated wine list designed to showcase the most interesting terroirs of the world and a range of classic liquors.













## *the library*

Seating capacity is up to 40 pax,  
standing up to 60 pax

### Private Use & Venue Hire

11:00 - 15:00

minimum spending for F&B IDR 30.000.000

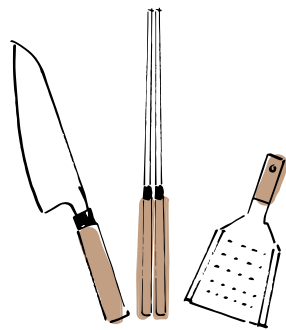
18:00 - 22:00

minimum spending for F&B IDR 50.000.000

additional hour IDR 5.000.000 / hour

with 1 week prior notice

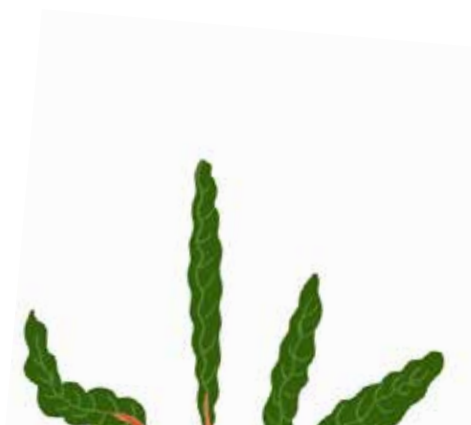




## *the dining room*

At The Dining Room, chef Takahashi Hideaki will prepare Kaiseki-ryori Dining Experience at the counter with premium ingredients.

An experience not to be missed.













## *the dining room*

Seating capacity is up to 14 pax table setting

### Venue Hire

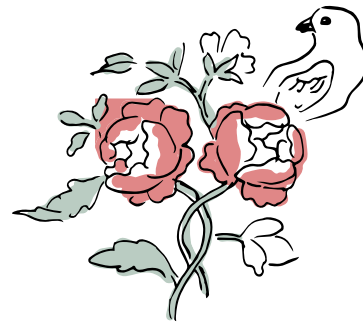
Lunch 11:30 - 14:30

IDR 10.000.000

Dinner 18:00 - 22:00

IDR 15.000.000

with 1 week prior notice



*gossip room*

A little hidden room in the Penthouse. With surroundings of a dream walking closet,  
the gossip room gives the girls (boys are welcome, of course) to chat freely  
while enjoying a good cocktail and light bites.













## *gossip room*

Seating capacity is 4 - 6 pax

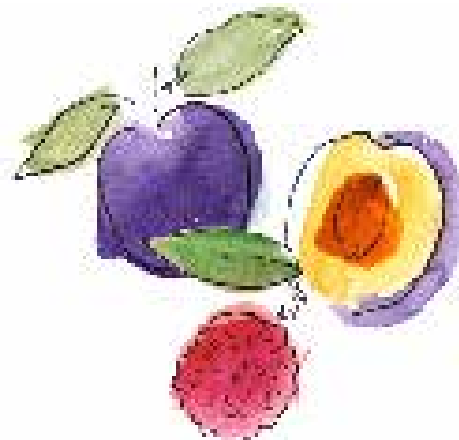
### Venue Hire

11:00 - 15:00

minimum spending IDR 5.000.000

18:00 - 22:00

minimum spending IDR 5.000.000

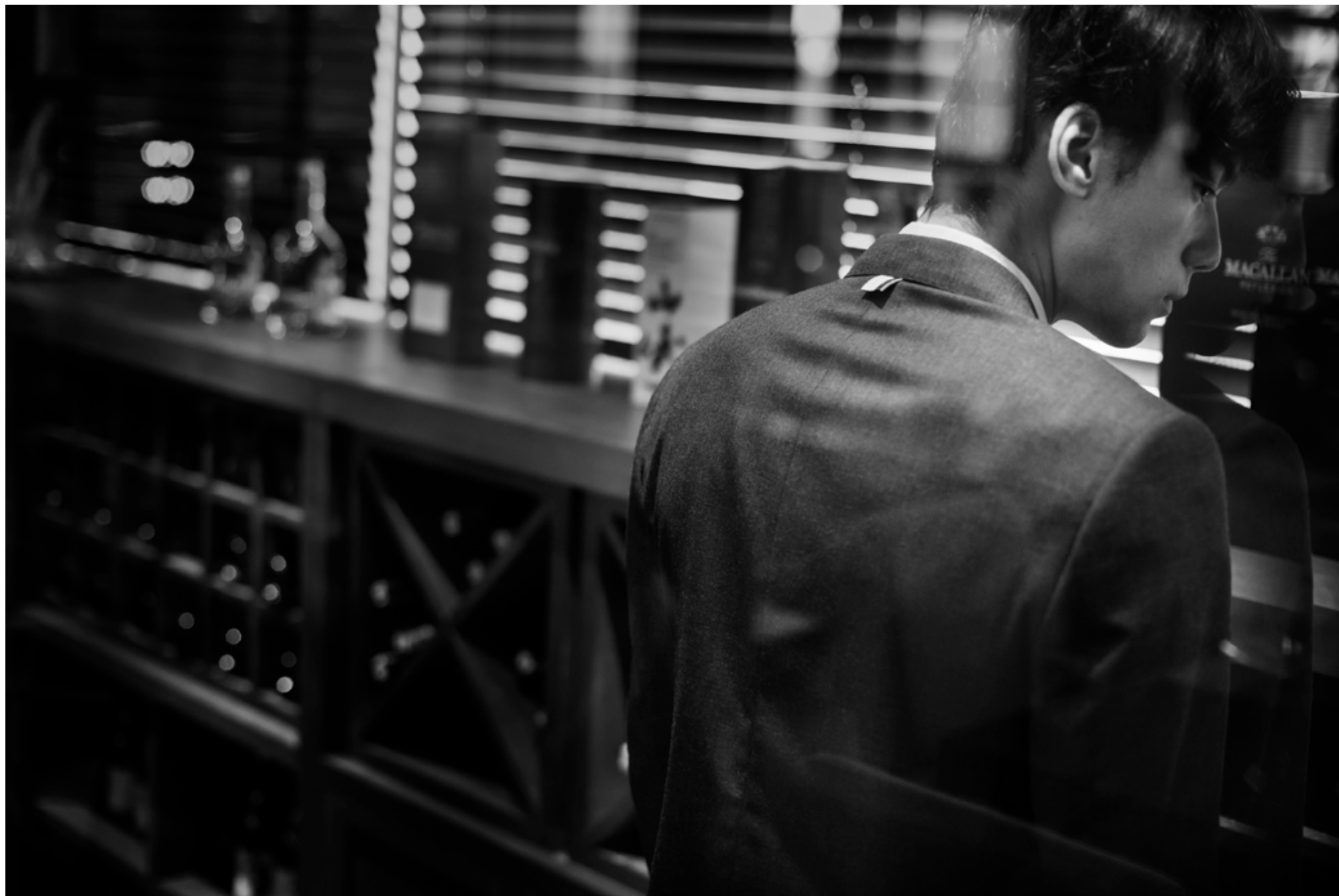






*wine cellar*

The Penthouse wine cellar offers a curated wine list  
designed to showcase the most interesting terroirs of the world



# *the perfect host*

Set a date and invite your friends and family over.

Book the entire Penthouse, and celebrate those special moments in style.

With delicious food and refreshing drink or two, take time to savor a good evening with your friends and family.

The penthouse's perfect setting will make all your guests feel at home





# *the penthouse*

Exclusive Hire including selected Set Menu

Seating capacity is 75 pax, standing up to 100 pax

## Weekdays (Mon-Tue)

4 hours

IDR 50.000.000

## Weekdays (Wed-Thu)

11:00 - 15:00

IDR 50.000.000

18:00 - 22:00

IDR 70.000.000

Full Day

IDR 100.000.000

## Weekends (Fri-Sun)

11:00 - 15:00

IDR 50.000.000

18:00 - 22:00

IDR 100.000.000

Full Day

IDR 130.000.000

## Electricity

per hour

IDR 1.500.000

## Waste Management

per event

IDR 500.000

## Damage Insurance

per event

IDR 7.000.000 (refundable)

# OPERATING HOURS

*Lunch · Dinner*

*Tuesday - Sunday*

11:00 - 23:00

*Monday*

Closed



# THE PENTHOUSE

BY THE PAPILION

The Papilion, 4<sup>th</sup> Floor

Jl. Kemang Raya No. 45AA, Jakarta Selatan 12730, Indonesia

E: [marketing@thepapilion.co.id](mailto:marketing@thepapilion.co.id) | E: [deasy@thepapilion.co.id](mailto:deasy@thepapilion.co.id)

P: +62 811 1292 689

[www.thepapilion.com](http://www.thepapilion.com)